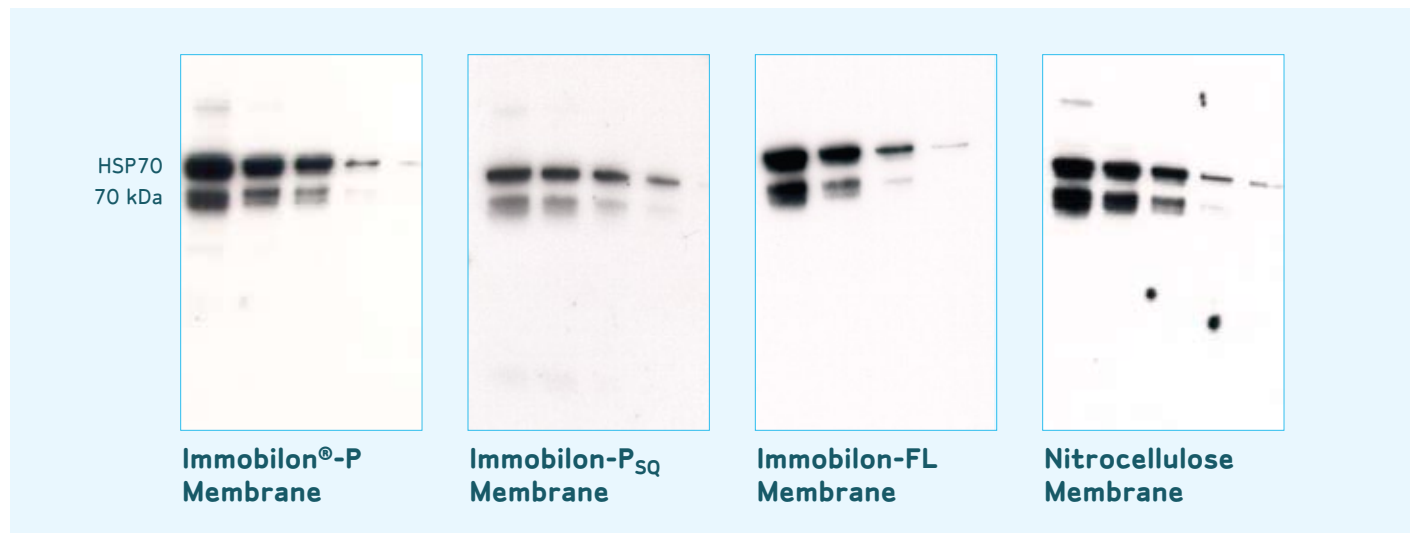


The SNAP i.d. system is compatible with your favorite membrane and detection method!

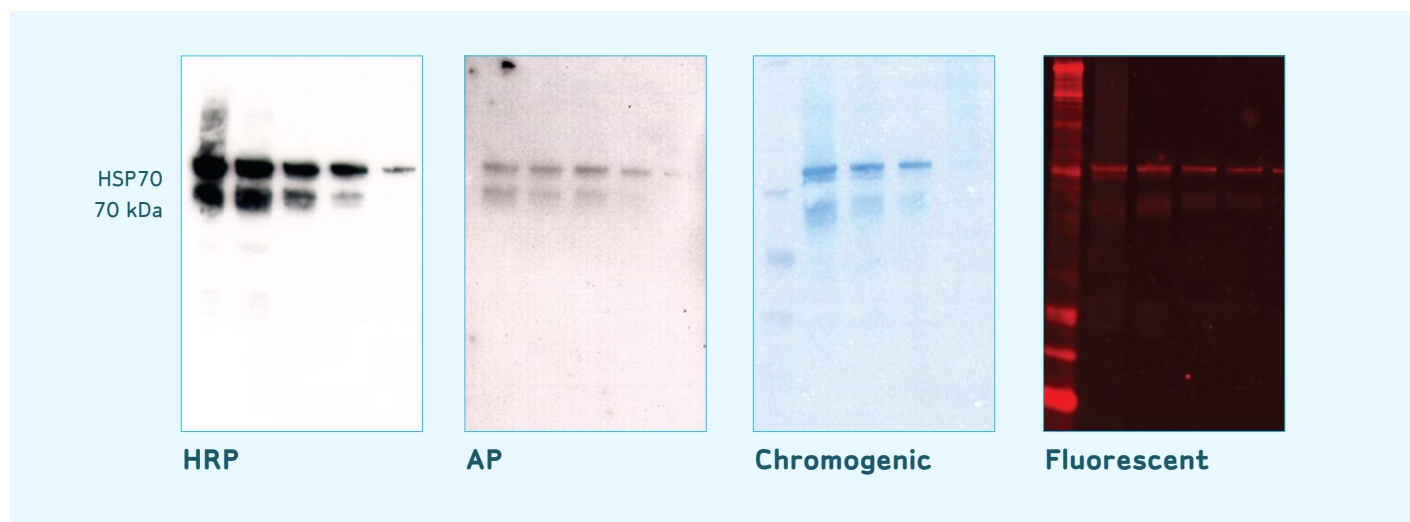
The SNAP i.d. system achieves high quality results without any additional reagent consumption (e.g., antigen, antibody or detection reagents). The system's unique design enables the use of small volumes for antibody incubations with either polyvinylidene difluoride (PVDF) or nitrocellulose blotting membranes. Because it uses a vacuum to actively drive reagents through the membrane,

blocking and washing steps are achieved thoroughly and rapidly. The SNAP i.d. system is compatible with fluorescent, chemiluminescent or chromagenic detection methods. Moreover, the sequence of steps required to process a western blot with the SNAP i.d. system is identical to that used in traditional immunodetection.

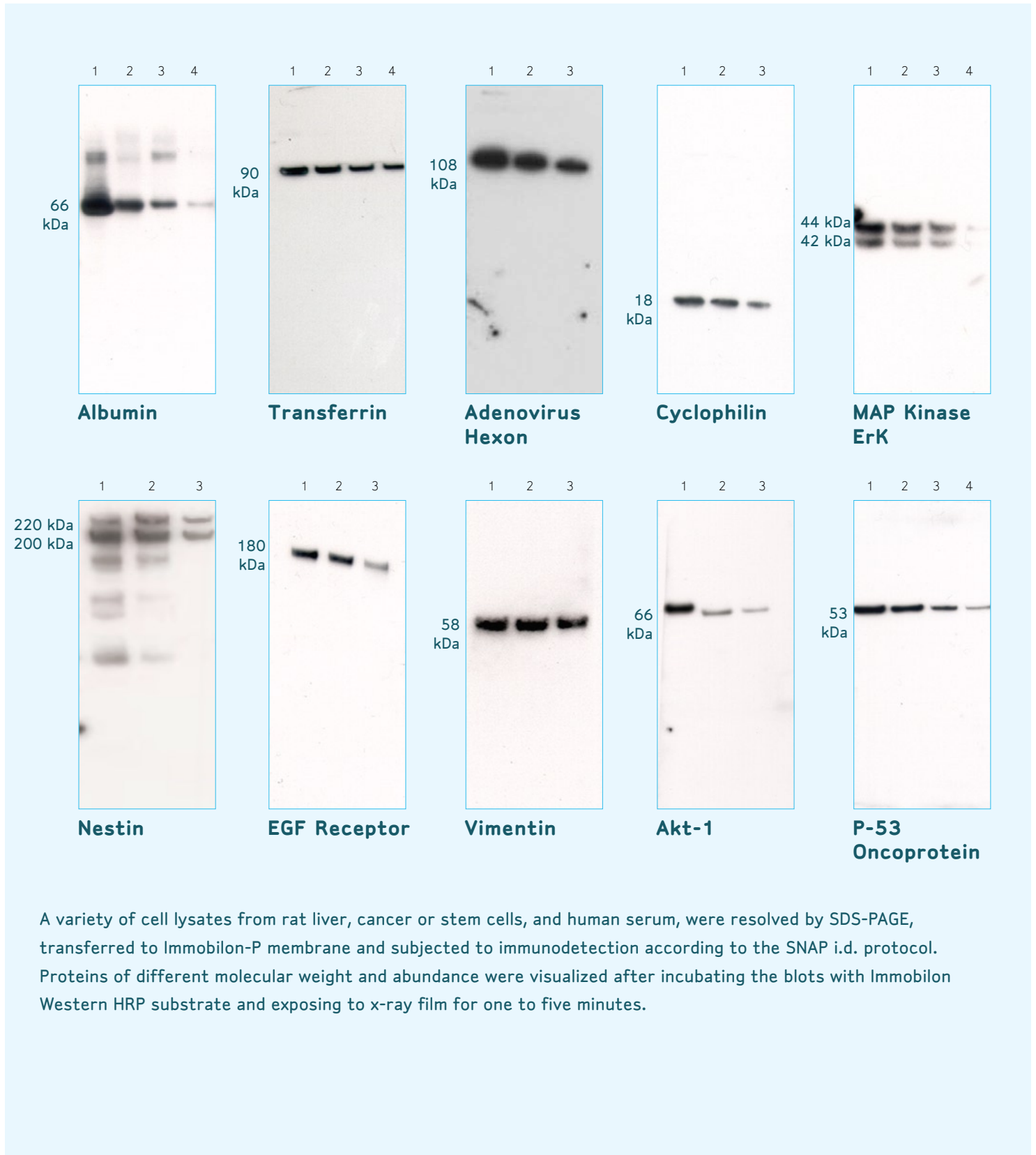
Any Membrane



Any Detection Method



Low, Medium or Highly Expressed Proteins



The Snap I.D. system is compatible with a wide variety of antibodies.